

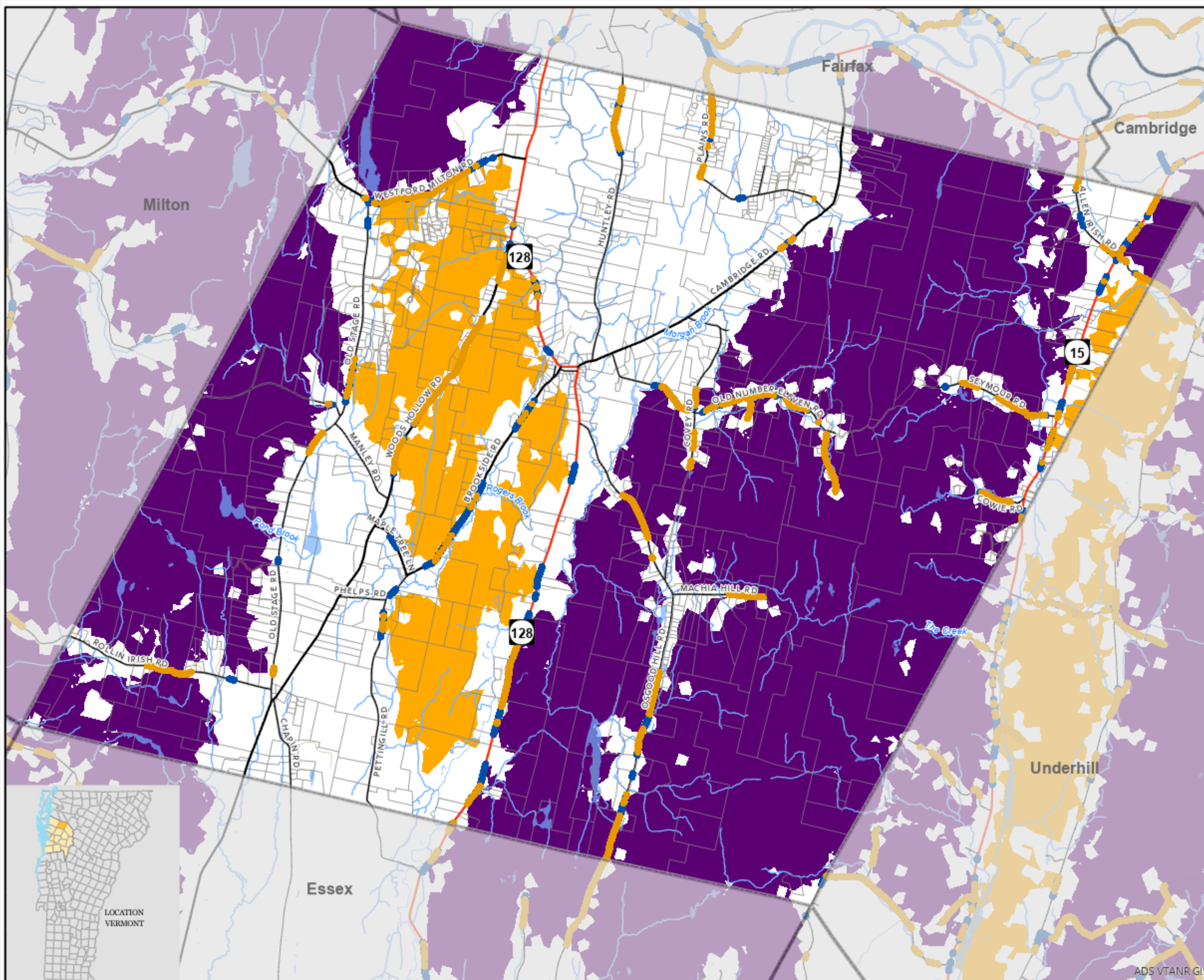
Map 10 Forest Blocks and Wildlife Crossings Westford Vermont

VT Conservation Design Highest Priority Forest Block

Interior Forest Blocks
■ Highest Priority

Connectivity Blocks
■ Highest Priority

Terrestrial Wildlife Crossings
■ Highest Priority
■ Priority



1:48,000



Sources:
 VT Conservation Design Data - ANR map service 2020
 roads - Vtrans, 2020
 Parcels - 2017
 surface water - VT Hydrography set - 2010

Disclaimer:
 The accuracy of information presented is determined by its sources. Errors and omissions may exist. The Chittenden County Regional Planning Commission is not responsible for these. Questions of on-the-ground location can be resolved by site inspections and/or surveys by registered surveyor. This map is not sufficient for delineation of features on-the-ground. This map identifies the presence of features, and may indicate relationships between features, but is not a replacement for surveyed information or engineering studies.



ADS VTANR GIS



LOCATION
VERMONT